



**VEKA** AluConnect

## Aluminium residential doors

**Weld highly thermally insulated aluminium residential doors quickly and easily in accordance with the AluConnect principle**

- Timelessly elegant aluminium surfaces
- Excellent thermal insulation thanks to PVC-U core
- Weatherproof powder coating in attractive colours
- Four different residential door sashes with a system installation depth of 82 mm
- Can be combined with innovative threshold solutions
- Easy welding-based production



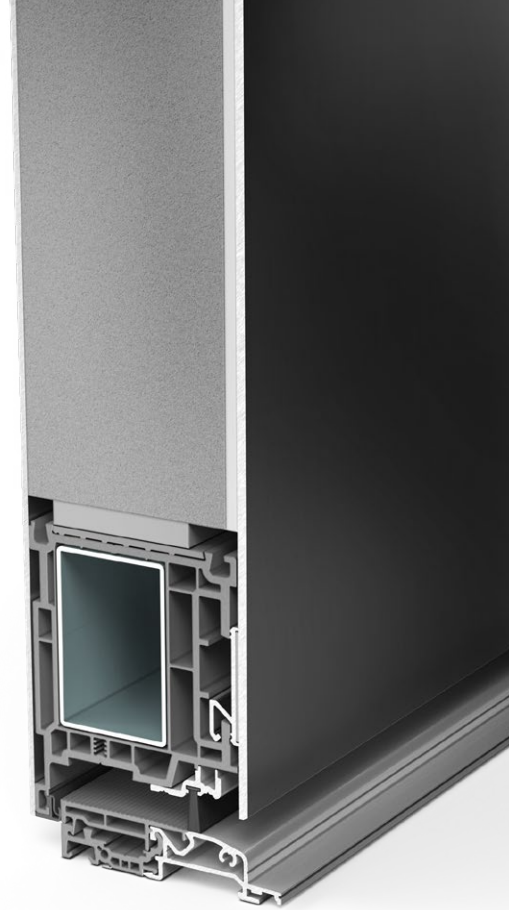
The Quality Profile  
★ ★ ★ ★ ★ ★ ★ ★

# The best of two worlds: VEKA AluConnect residential doors

With AluConnect, VEKA has completely rethought the aluminium window: high-quality aluminium surfaces on the outside and a newly developed PVC-U core for excellent thermal insulation on the inside, both firmly structurally bonded together.

This unique construction principle has now also been applied to residential doors. With a system installation depth of 82 mm and a centre seal frame, they achieve a first-class  $U_f$ -value of 1.1 W/(m<sup>2</sup>K) and come in four different versions.

The VEKA AluConnect range comprises side parts, skylights and casing frame solutions. The residential doors can be combined with VEKA threshold solutions and can be fitted with readily available hinges and locks.



The traditional sash for glazing or insert panels



The outward opening sash for glazing or insert panels



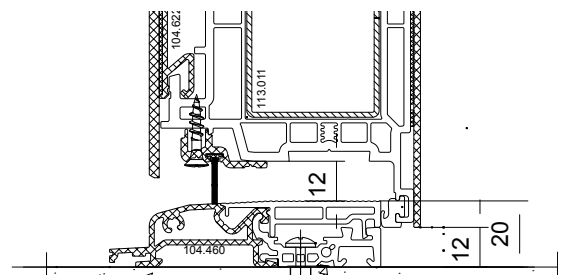
The sash-covering solution on one side



The sash-covering solution on both sides

## Technical data

System installation depth	82 mm
Min. visible surfaces	Fixed panel: 83 mm Frame and sash: 178 mm
Max. glass thickness	56 mm
Max. sash width	1,150 mm
Max. sash height	2,400 mm
$U_d$ -value depending on design	up to 0.9 W/(m <sup>2</sup> K)
Wind load resistance	up to Class B3
Impermeability to driving rain	up to Class 6A
Air permeability	up to Class 4
Burglar resistance	up to Class RC 2



Thanks to their floating attachment, the exterior sash-covering panels can easily expand in the heat. The patented construction principle also facilitates installation.



The Quality Profile  
★★★★★★